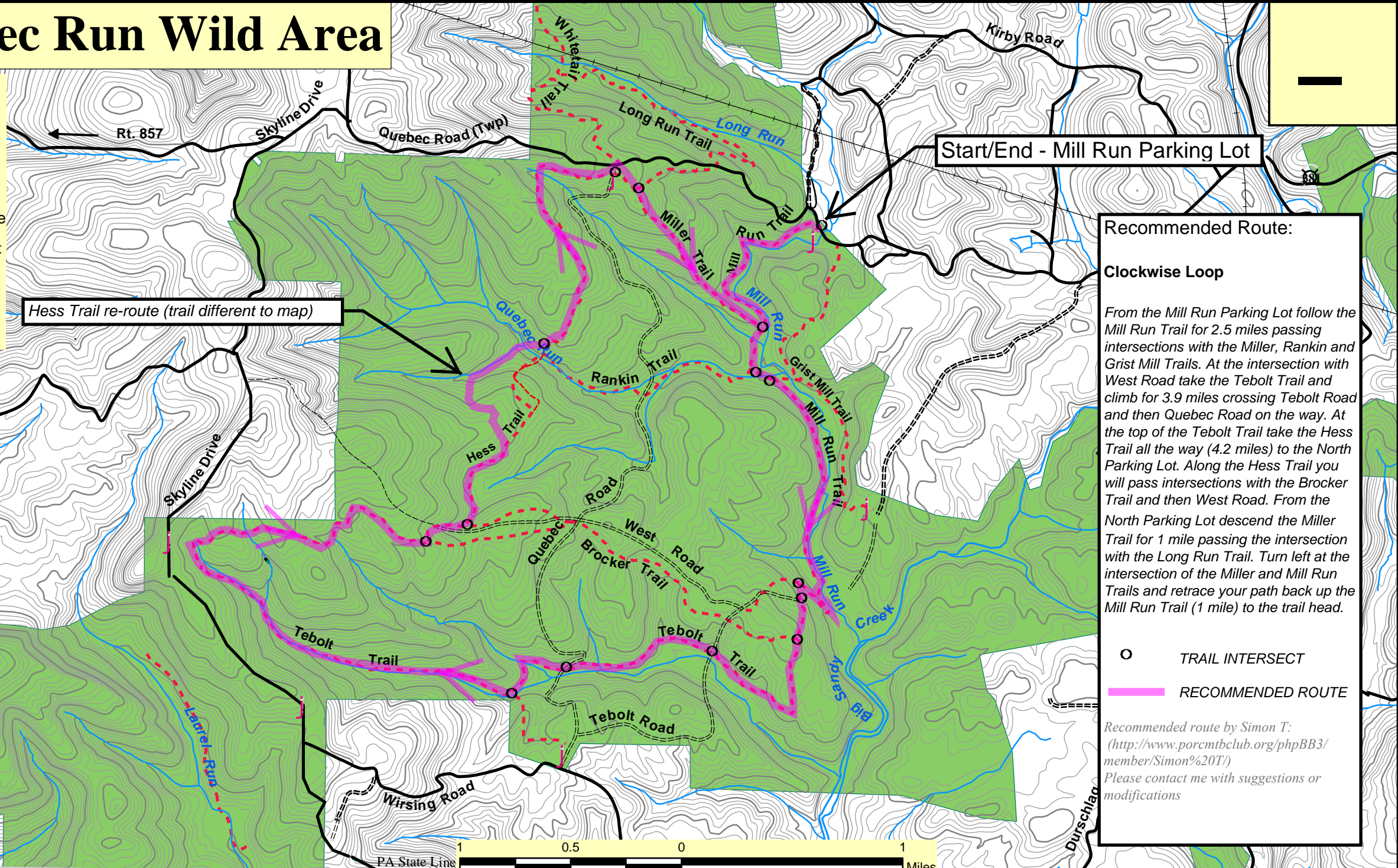


# Quebec Run Wild Area

## Legend

- - - Trails
- Road
- Stream
- Contour Line
- State Forest
- + — Utility Line
- j Parking



Start/End - Mill Run Parking Lot

Hess Trail re-route (trail different to map)

### Recommended Route:

#### Clockwise Loop

From the Mill Run Parking Lot follow the Mill Run Trail for 2.5 miles passing intersections with the Miller, Rankin and Grist Mill Trails. At the intersection with West Road take the Tebolt Trail and climb for 3.9 miles crossing Tebolt Road and then Quebec Road on the way. At the top of the Tebolt Trail take the Hess Trail all the way (4.2 miles) to the North Parking Lot. Along the Hess Trail you will pass intersections with the Brocker Trail and then West Road. From the North Parking Lot descend the Miller Trail for 1 mile passing the intersection with the Long Run Trail. Turn left at the intersection of the Miller and Mill Run Trails and retrace your path back up the Mill Run Trail (1 mile) to the trail head.

- TRAIL INTERSECT
- RECOMMENDED ROUTE

Recommended route by Simon T:  
 (<http://www.porcmtclub.org/phpBB3/member/Simon%20T/>)  
 Please contact me with suggestions or modifications

PA State Line

PA State Line

Miles